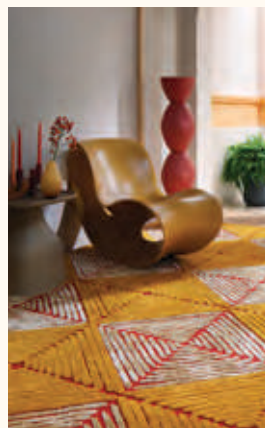


RTSTUDIO x **MOOK V**



THE TACTILE
VERNACULAR



c
o
l
l
e
c
t
i
o
n

RTSTUDIO

every home deserves a work of art

present



ABOUT

RTSTUDIO

A unique shopping experience offering exceptional handcrafted carpets inspired by our Thai artisanal heritage infused with a modern residential design vernacular.

**We take flooring to another level,
with inspired designs that will
elevate and enhance any space.**

It is our goal to ensure that these skills and traditions are maintained and continue so everyone can experience the exquisite luxury that a wool rich handmade carpet has to offer.

Choose the quality, the design & the color(s) to create your own customized rug. All designs are ready to make in the standard sizes, and can also be customized to any size requirements to suit any setting.

Thank you for your trust in our brand.



MOOK V

Ploenchan Vinyaratn



Embark on a journey of unparalleled luxury with our exquisite rugs collection a seamless fusion of artistry and visionary design by RT Studio in collaboration with Mook V.

With a legacy spanning over 50 years, Royal Thai stands as an embodiment of the ultimate in carpet craftsmanship.

Each tuft is a testament to their unwavering commitment to perfection, resonating with the echo of countless hours devoted to their craft.

Mook V, a luminary in textile art and design, infuses her brilliance to illuminate every thread. With an innate ability to transcend the ordinary and sculpt the extraordinary, her designs breathe life into ancient wisdom and contemporary allure. Each creation becomes an emotional bridge, harmoniously connecting eras and evoking sentiments beyond the tangible.

This opulent project unfolds through eight collections and 38 designs. Each piece marries Royal Thai's craftsmanship with Mook's creativity, resulting in an exquisite tapestry of heritage and innovation. Step into a realm where luxury intertwines with art, and elegance becomes a way of living. These rugs are more than furnishings; they encapsulate a legacy of distinction, a realm of indulgence.

RT Studio and Mook redefine paradigms and offer an invitation to immerse oneself in an unparalleled experience, where emotions are woven into threads and every step is a sumptuous journey through variegated colors and cultures.

"TACTILE VERNACULAR"

The first collaborative collection from Royal Thai with textile artist and designer Mook V - Ploenchan Vinyaratn, is a captivating testament to the rich and diverse heritage of hilltribe patterns. These meticulously designed pieces are a manifestation of artistic expression deeply rooted in the cultural tapestry of Thailand. The collection draws its inspiration from the indigenous hilltribes of this region, where age-old techniques and intricate designs have been passed down through generations.

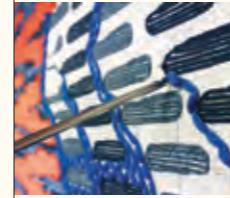
This collection speaks to a universality that transcends geographical boundaries. One born not from a shared geography but from the handling of needle and thread that unites humanity in the act of creation. The motifs woven into these textiles whisper a universal language of human creativity, showcasing our inclination to adorn and tell stories through the medium of fabric.

The "Tactile Vernacular" collection spans the traditional and the contemporary, where hilltribe patterns are reinvented and reimagined. It is not a fusion of styles; it is a dialogue between past and present, where craftsmanship steeped in tradition finds new resonance in a contemporary context with modern techniques.



FLORET

TREELEAF



SPIRAL



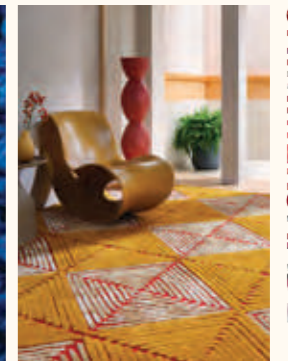
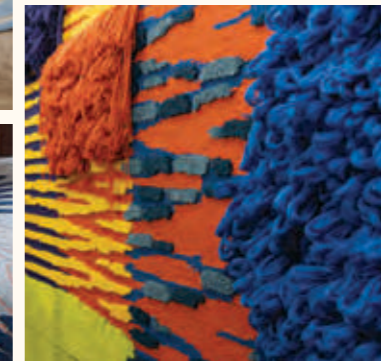
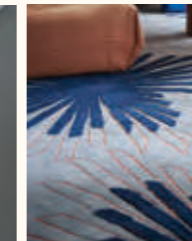
ARACHNI



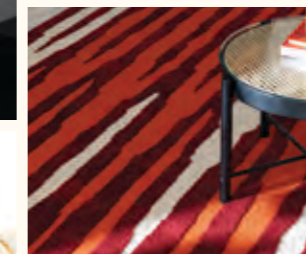
HAIRPIN



PENTA



SHIMMERSHADE



SPIKELET

"Tactile Vernacular" is a testament to the enduring power of textile art to transcend cultural boundaries, connecting us through the shared human experience of creation and expression, while honoring the indigenous cultures that have influenced this collection.

MOOK V
Ploenchan Vinyaratn





Penta

The enigmatic "Ta Jow" pattern, a hallmark of Pwo Karen artistry, is a traditional embellishment of a woven fabric pattern's borders. Echoing the symmetry of the Roman numeral V, the prefix "penta" reverberates with the Hellenic number five.



Size: 2.40 x 3.00m.

Material: Wool, Nylon

Technique: Cut, Loop

PENTA - RD





Hairpin

At its heart, "Hairpin" draws inspiration from "Kuchu," which translates in the Pwo Karen language to "hairpin." This ancient pattern, steeped in the traditions and culture of the Karen community, mirrors the delicate bamboo hairpins used by Pwo Karen women to secure their styled hair. This novel interpretation of the Kuchu pattern, revered for its complexity and historical significance, is a primal and organic aesthetic bridge between past and present.

Size: 2.40 x 3.00m.
Material: Wool, Nylon
Technique: Cut, Loop



HAIRPIN - FS



Spiral

Spiral patterns transcend geographical and cultural borders, symbolizing cycles of life, seasons, and celestial movements.



Size: 2.40 x 3.00m.
Material: Wool, Shiny Nylon
Technique: Cut, Loop



SPIRAL - BL



Shimmershade



Since ancient times, Chi Mi Cha Du, or the powder puff lily, is believed to bring good luck to Akha households, would cultivate these flowering plants near their homes. Their ancestors added the auspiciousness of the plant to fabrics through embroidery pattern. Evoking the sun and stars, the phonetic resemblance to the original name in Akha inspires the whimsically-named shimmershade.



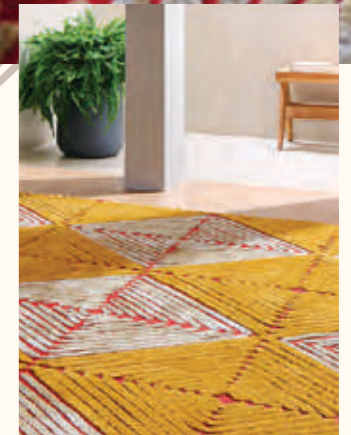
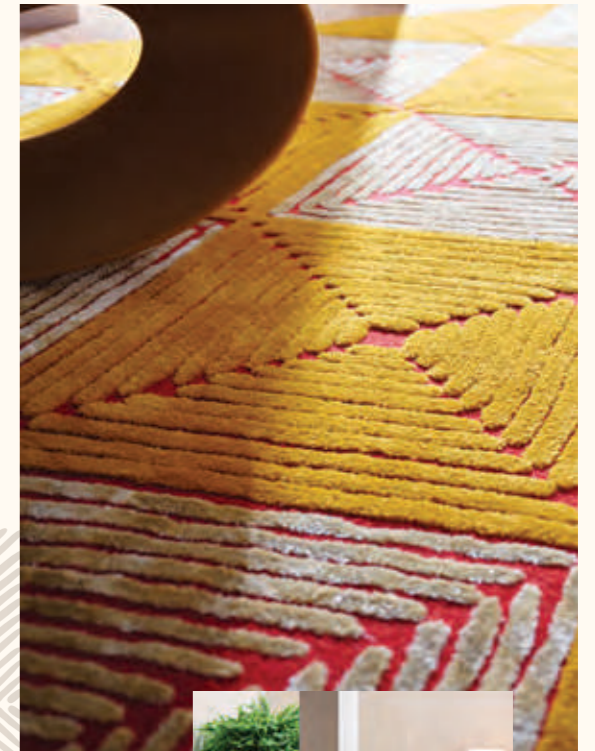
Size: 2.40 x 3.00m.
Material: 100% Wool
Technique: Cut, Loop

SHIMMERSHADE - BL



Treeleaf

The essence of "Chow Yer" lies in its intricate composition: a convergence of eight triangles meticulously embroidered with threads of two colors. The pointed summits delicately touch to form a harmonious square, mirroring the majestic leaves of the 'Ue Nu' tree. The threads, like tendrils emanating from the center, emulate the pattern of the Ue Nu's majestic leaves.



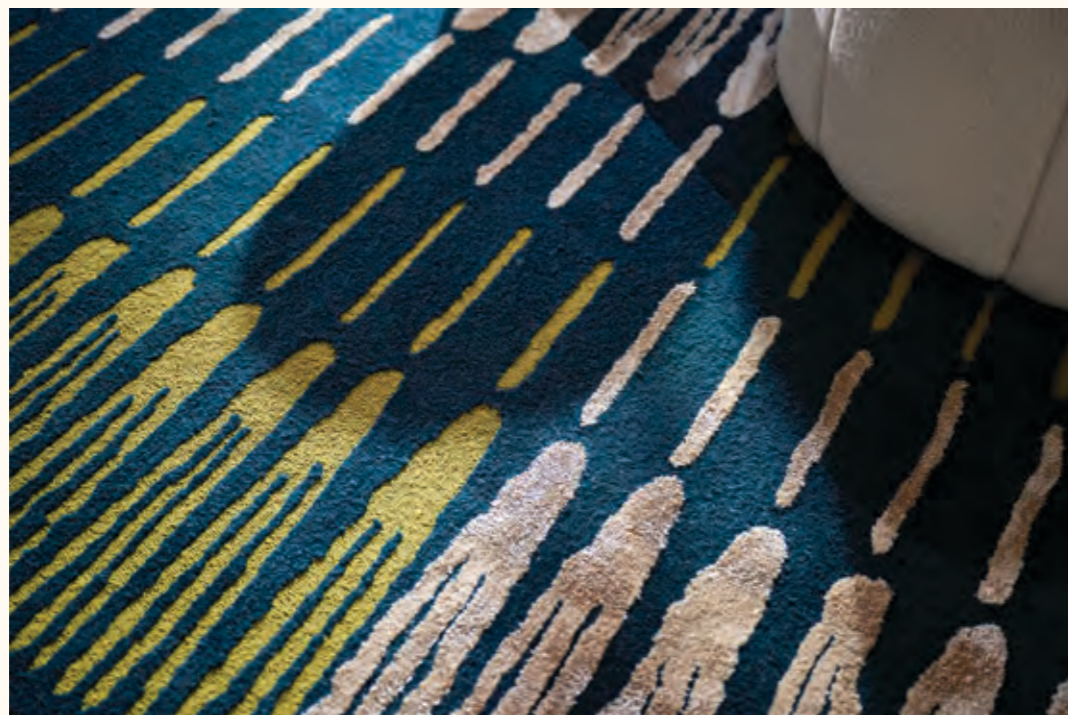
Size: 2.40 x 3.00m.

Material: Wool, Nylon, Shiny Nylon

Technique: Cut, Loop

TREELEAF - OR





Spikelet

"Chow Pah," an embodiment of this harmonious alliance, derives its name from the Akha embroidery of small dots that are reminiscent of grass flowers (spikelets) with protruding edges resembling tassels. Inspired by the windswept beauty of blooming grass flowers in the fields, Chow Pah perpetuates the Akha reverence for nature, encapsulating the ephemeral dance of wind-kissed blossoms.

Size: 2.40 x 3.00m.

Material: Wool, Nylon, Shiny Nylon

Technique: Cut, Loop



SPIKELET - GN





Floret

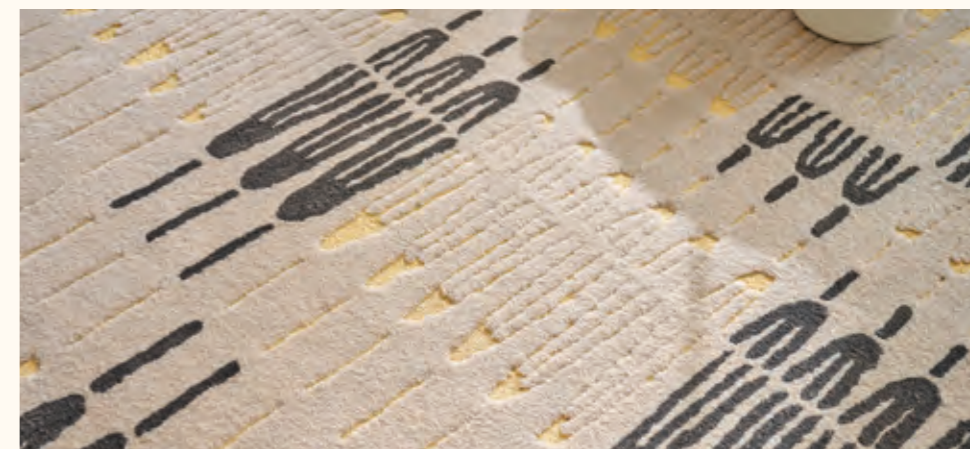
This sub-collection draws inspiration from the smaller counterpart of grass blooms, known as florets—tiny, petal-less entities that form an integral part of grass spikelets. Evoking nature's meticulous geometry, each floret in the collection aligns in a harmonious procession, creating a mesmerizing pattern that speaks to the cyclical beauty inherent in the natural world.



Size: 2.40 x 3.00m.

Material: Wool, Shiny Nylon

Technique: Cut, Loop



FLORET - BT

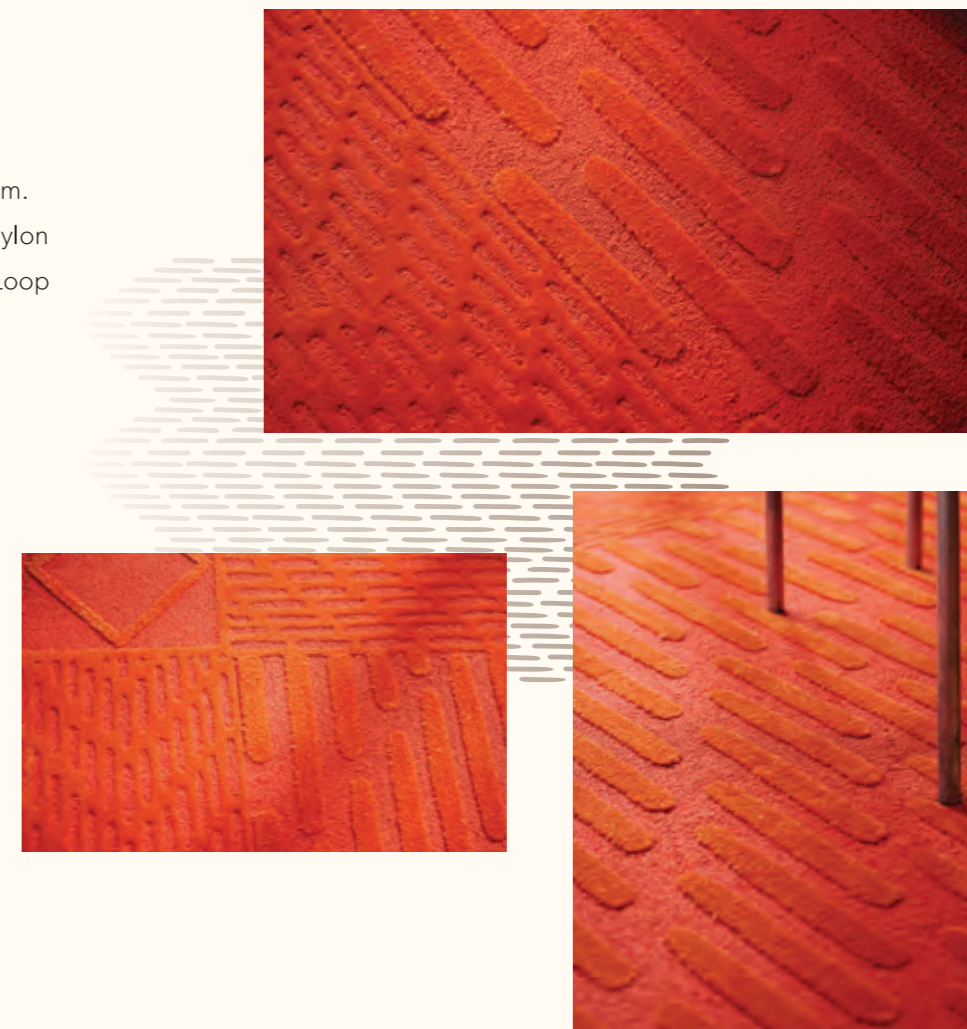




Arachni

Within the intricate lexicon of Akha craftsmanship, "A Ou Loh Mah" unfolds as a testament to the symbiotic relationship between natural inspiration and handcrafted mastery. This ancient pattern, reminiscent of a spider's legs, elicits a reflection on the arachnid dance witnessed in the Akha homes and forests. Resonating with the elegance of a spider's measured stride, the name of this subcollection is thusly inspired.

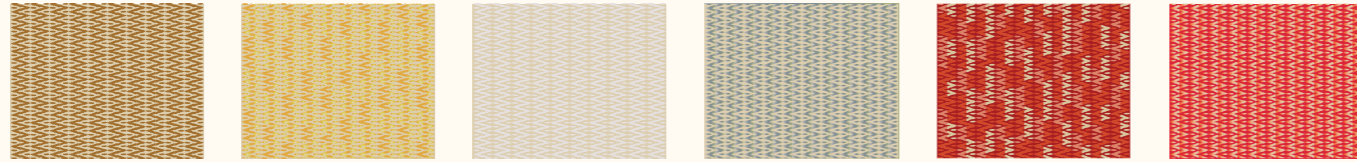
Size: 2.40 x 3.00m.
Material: 100% Nylon
Technique: Cut, Loop



ARACHNI - RD

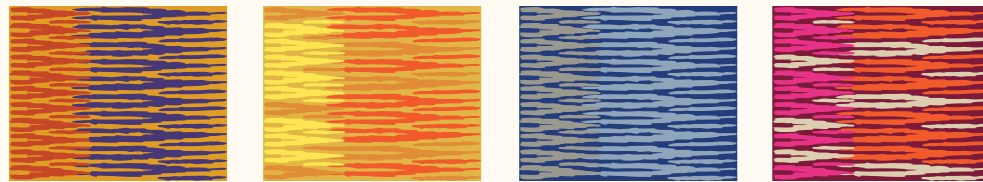
The Tactile Vernacular Collection

PENTA



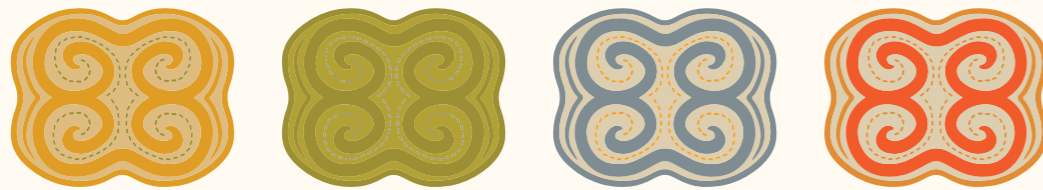
PENTA - BR PENTA - BGS PENTA - LB PENTA - BLS PENTA - RD PENTA - RDS

HAIRPIN



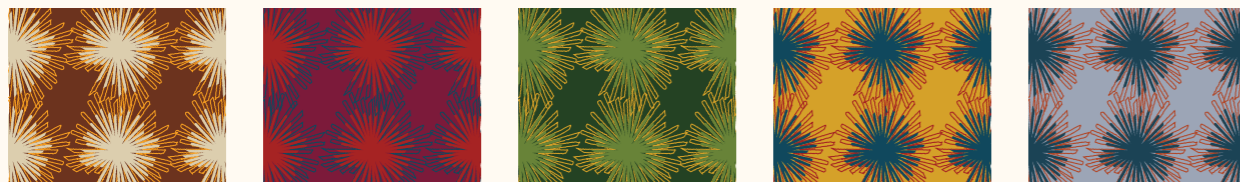
HAIRPIN - PP HAIRPIN - YL HAIRPIN - BL HAIRPIN - FS

SPIRAL



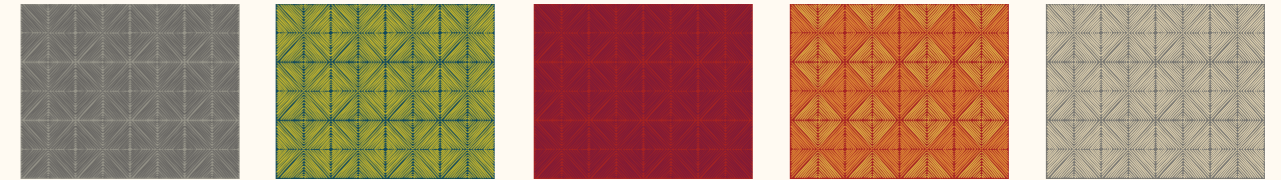
SPIRAL - YL SPIRAL - OL SPIRAL - BL SPIRAL - OR

SHIMMERSHADE



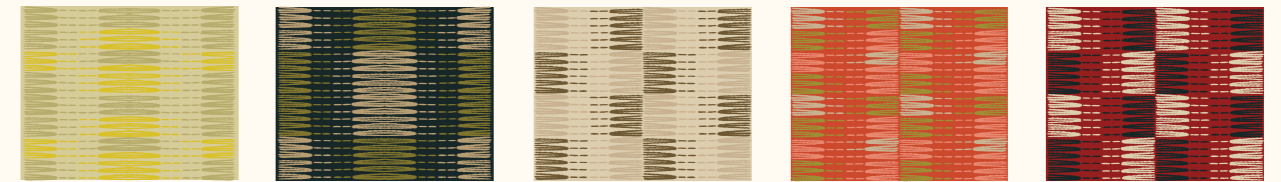
SHIMMERSHADE - BR SHIMMERSHADE - RD SHIMMERSHADE - GN SHIMMERSHADE - YL SHIMMERSHADE - BL

TREELEAF



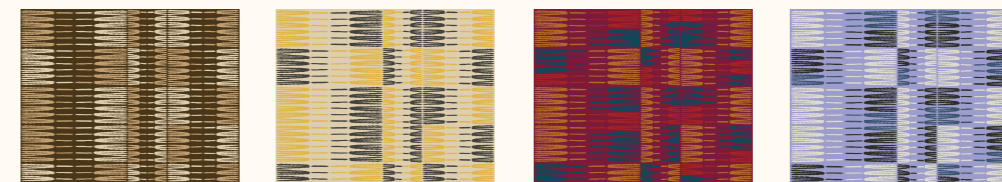
TREELEAF - BK TREELEAF - GN TREELEAF - RD TREELEAF - OR TREELEAF - BR

SPIKELET



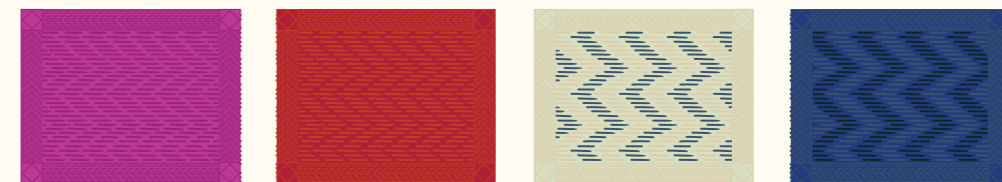
SPIKELET - LM SPIKELET - GN SPIKELET - BR SPIKELET - OR SPIKELET - RD

FLORET



FLORET - BR FLORET - BT FLORET - MN FLORET - PP

ARACHNI



ARACHNI - FS ARACHNI - RD ARACHNI - LM ARACHNI - BL



LOCATION

2054 New Petchburi Rd.,
Bangkapi, Huaykwang, Bangkok

T: +66 2 318 3960

E: getintouch@thertstudio.com
www.royalthai.com/thertstudio

  [thertstudio](#)



[@thertstudio.com](#)

RTSTUDIO